



COLIN SAY & CO P/L LED BEEF EXTRAVAGANZA

OFFICIAL PROGRAM

Saturday - Sunday 17-18th September 2022

**Woolworths & Bindaree & Our Cow Carcass
Competition**

MSA Approved Led Steer & Heifer Competition

Colin Say & Co P/L Jackpot Competition

Colin Say & Co. Shoot-Out

Limousin State of Origin

NSW Charolais Group Showcase

Shad Bailey

0458 322 283

Nathan Purvis

0427 324 078



Colin Say & Co. Pty Ltd

rma network.

Accredited Member

COLIN SAY & CO. LED BEEF EXTRAVAGANZA

SEPTEMBER 2022

APPLICATIONS TO ENTER CLOSE Friday 12th August 2022 at 5:00pm

ENTRY FEES:

Class 1 & 2 – Open Led Heifer	\$120.00
Class 3 to 9 – Open Led Steer	\$120.00
Class 10 – Junior Led Heifer	\$80.00
Class 11 & 12 – Junior Led Steer	\$80.00
Class 13 & 14 – Unled Steers & Heifers	\$90.00
Jackpot Competition – Winner take ALL	\$30.00

Entry fees will be refundable if animals are withdrawn by Friday 20th August

NUMBER OF ENTRIES PER CLASS	No restrictions on the number of entries
DELIVERY OF CATTLE	Glen Innes Showgrounds – 16 th September
WEIGHING	Saturday 17 th September – 7:00am
NSW CHAROLAIS GROUP SHOWCASE	Saturday 17th September - 2:00pm
COLIN SAY SHOOTOUT	Saturday 17 th September – 2:30pm
LIMOUSIN STATE OF ORIGIN	Saturday 17 th September – 3:00pm
HOOF JUDGING (JUNIOR)	Sunday 18 th September – 9:00am
HOOF JUDGING (OPEN LED)	Sunday 18 th September – 10am
PROCESSING OF CATTLE	Monday 19 th September
RESULTS ANNOUNCED	Monday 26 th September – Live Streamed 7pm

Important Information for all Exhibitors:

- ◆ All exhibitors must comply with all government guidelines always
- ◆ Pending Government Health Guidelines at the time of competition, a maximum number of people per entry may have to be put in force.

POINT SCORING REGULATIONS

1. Hoof Point Scoring classes will be first—46, maximum accrued points for hoof will 50 points. Placegetters 1/2 point difference down to a minimum of 40 points. Unplaced entries will have a gap of 1 point from placegetters or be allocated 38 points. First place and all place getters points may be adjusted as the judging progresses under the judges discretion.
2. Champions receive a maximum of 2 points. Grand Champion on the Hoof receives 2 bonus Points.
3. All entries presented for judging in the hoof competition are automatically entered into the Hook competition and must compete.
4. On the Hook judging will be carried out by qualified Aus-Meat Chiller Assessors. A maximum of 100 points for each carcass comprising each entry shall be allotted by the Judges on the scales as detailed later in the Schedule.

EATING QUALITY

Will be judged from all carcass Classes of the Woolworths and Bindaree Carcass utilising the MSA Eating Quality model. The MSA Grading model predicts eating quality of 40 muscles by 6 different cooking methods. It applies all our current knowledge about the factors affecting meat. The MSA eating quality score is the average predicted MSA eating quality score of 11 major primal cuts, cooked by their optimum method. If carcasses fail to meet MSA minimum requirements, they are below the benchmark standard for high quality table beef and will not receive an eating quality score.

MEAT STANDARDS AUSTRALIA

ALL steers **MUST** remain on full feed and water up unto dispatch from the showgrounds on Sunday, 18th September. Any steer found to have feed and/or water withdrawn will be automatically disqualified and will **NOT** be eligible for competition and entry fee will be forfeited.

COLIN SAY & CO P/L LED STEER JACKPOT COMPETITION

Eligibility: Steers/heifers entered in the Led Steer and Carcass Competition upon payment of the Jackpot entry fee.

Entry Fee: \$30 per head (all of which will be added to the prize purse) in addition to the Led Steer and Carcass Competition entry fee.

Applications to Enter Close: Friday, 12th August, 2022 with the Led Steer/heifer and Carcass Competition entries (late entries will not be accepted).

Divisions: The competition will be conducted in five divisions— Butcher, Heifers, Light, Medium & Heavy, with the overall winner being selected from these divisions.

Prizemoney: Jackpot — 100% of the total purse for the winner of the highest combined total points from both Hoof & Hook sections.

Colin Say & Co. Incentive: Eligible for all entries purchased out of the C.S.C Potential Show Steer Sale. 2 divisions, Junior & Open—\$500 each winner takes all. Highest pointed Steer/Heifer combined Hoof & Hook points. NO ENTRY FEE APPLIES

Colin Say Shootout: All entries purchased out of the C.S.C Potential Show Steer are eligible to enter this separate class. NO ENTRY FEE APPLIES.

Limousin State of Origin: To be eligible to be judged for the Limousin State of Origin, exhibits must either be pure bred or sired by a registered Limousin Sire. Entry's must be accompanied with a breed certificate.

NSW Charolais Group Showcase: There will be 2 classes, each class prizemoney of \$500 each. There will be a Pure Bred Class and also a Charolais infused class this being the exhibit must be sired by a registered sire. Breed certificates mandatory. Both these Classes will be judged Steer / Heifer together.

Special Regulations

- Inspections, weighing and scanning will take place on Saturday 17th September. All steers/heifers will be inspected in accordance with the live weight guidelines. Colin Say & Co P/L, Woolworths, Bindaree and Our Cow reserve the right to reject any steers /heifers that are out of specification or unsuitable to Woolworths, Bindaree & Our Cow specifications.
- Colin Say reserve the right to alter the weights within their respective weight classes (Heifer/Light/Medium & Heavy) for evenness of number of entries per class.
- Colin Say & Co P/L reserves the right to reject any entry or inferior animal.
- Any animal outside weight specifications will be ineligible and entry fee will be forfeited.
- All exhibits MUST have nose rings.
- **HGP treated steers will not be accepted.**
- The Colin Say & Co P/L Led Steer Competition has been approved by Meat Standards Australia (MSA) as an eligible MSA pathway and ALL entries will be eligible to be MSA graded.
- Therefore ALL Exhibitors MUST become MSA registered to be eligible to enter the competition. To register for MSA online go to <http://registerproducer.msagrading.com.au>
- All exhibitors will be required to supply their PIC and MSA registration number at the time of entry and on the day a PIC of their last known location of the exhibit.
- Individual National Vendor Declaration Form (NVD) AND a MSA Vendor Declaration Form will be required for each exhibitor. Please submit these forms to the office by Thursday, 15th September. Prior to weighing.
- **To maintain MSA approval status ALL steers MUST remain on full feed and water up unto despatch from Glen Innes Showground on Sunday, 18th September.**
- All entries MUST be suitable for the supermarket trade and showing no permanent incisors.
- All steers/heifers MUST be dehorned to avoid bruising, any regrowth MUST not exceed 3cm.
- All exhibits MUST be tied up in stalls allocated.
- All steers/heifers MUST be quiet when paraded. Unruly steers/heifers maybe disqualified at Colin Say & Co P/L discretion.
- All steers/heifers presented for judging are automatically entered into the hook competition and must compete.
- Steers/heifers to be processed at Woolworths Meats Tamworth / Bindaree Beef Inverell & Our Cow Casino which will include normal commercial grid penalties along with Chiller Assessment fee. (Grid to be available on day).
- Hook judging to be carried out by qualified Aus-Meat Chillier Assessors.
- All persons leading steers during judging or parades are required to be neatly attired. Dust coats, breed uniforms or vest are appropriate.
- All steers/heifers must have an NLIS Tag.
- The exhibitor accepts all risks and liability for any type of injury, loss or damage whether or not such damage is caused or contributed to by negligence omission or acts on the part of the organiser Colin Say & Co P/L its employees, volunteers or others participating in Colin Say & Co P/L Led Steer Extravaganza.
- Exhibitors will not under any circumstance, hold Colin Say & Co P/L responsible for their loss or misdelivery of livestock, or any damage thereto.
- Bedding available, if you require extra bedding please provide yourself.
- Camping facility available.
- Full canteen will be in operation. Dinner available Saturday night.

OPEN LED STEER & HEIFER

Colin Say & Co Pty Ltd would like to acknowledge all sponsors of the Led Beef Extravaganza, along with the Glen Innes Showground Trust for allowing the use of the grounds. These classes are open to all competitors, with exhibitors asked to wear neat attire, dust coats or breed society uniform or vests.

Live-Weight Class Weight Ranges:

Heifers:

Class 1 (Butcher Class) – Roberts & Morrow Led Heifer 380 – 430kg

1st: \$200 ; 2nd: \$150 ; 3rd: \$100 ; 4th: \$50 ; 5th: Ribbon

Class 2 – Roberts & Morrow Led Heifer 431 – 540kg

1st: \$200 ; 2nd: \$150 ; 3rd: \$100 ; 4th: \$50 ; 5th: Ribbon

Roberts & Morrow Champion Heifer (Junior & Open) - \$1000 Cash

The Land Reserve Champion Heifer (Junior & Open) - \$500 Cash

Light-Weight Steers:

Class 3 (Butcher Class) – Shanahans Livestock Transport Led Steer 360 – 420kg

1st: \$200 ; 2nd: \$150 ; 3rd: \$100 ; 4th: \$50 ; 5th: Ribbon

Class 4 – Shanahans Livestock Led Steer 421 – 450kg

1st: \$200 ; 2nd: \$150 ; 3rd: \$100 ; 4th: \$50 ; 5th: Ribbon

Class 5 – AuctionsPlus Led Steer 451 – 480kg

1st: \$200 ; 2nd: \$150 ; 3rd: \$100 ; 4th: \$50 ; 5th: Ribbon

AuctionsPlus Champion Lightweight Steer - \$1000 Cash

Taylor's Livestock Reserve Champion Lightweight Steer - \$500 Cash

Medium-Weight Steers:

Class 6 – Lockyer Groundspreading Led Steer 481 – 510kg

1st: \$200 ; 2nd: \$150 ; 3rd: \$100 ; 4th: \$50 ; 5th: Ribbon

Class 7 – Tyrepower Led Steer 511 – 540kg

1st: \$200 ; 2nd: \$150 ; 3rd: \$100 ; 4th: \$50 ; 5th: Ribbon

M & HM Locker Champion Medium-Weight Steer - \$1000 Cash

Jones Family Transport Reserve Champion Medium-Weight Steer - \$500 cash

Heavy-Weight Steers:

Class 8 – Stocktrans Transport Led Steer 541 – 600kg

1st: \$200 ; 2nd: \$150 ; 3rd: \$100 ; 4th: \$50 ; 5th: Ribbon

Class 9 – Frasers Transport Led Steer 601 – 680kg

1st: \$200 ; 2nd: \$150 ; 3rd: \$100 ; 4th: \$50 ; 5th: Ribbon

Elite Livestock Auctions Champion Heavy-Weight Steer - \$1000 Cash

Insignia Company Reserve Champion Heavy-Weight Steer - \$500 Cash

JUNIOR LED STEER & HEIFER

Colin Say & Co. would like to acknowledge the support of Woolworths Meats for their assistance in procuring the cattle in the below Junior Led Classes. The Junior Led & Unled Classes are open to Schools, Colleges and or under the age of 16. Schools and College exhibits must be led by a full-time student of that school of entry and must be 18 years of age or younger.

JUNIOR ENTRIES ARE ELIGIBLE TO ENTER THE JACKPOT COMPETITION!!

Live-Weight Class Weight Ranges:

Heifers:

Class 10 – Amos-Vale Herefords Junior Led Heifer 421 – 540kg

1st: \$100 ; 2nd: \$75 ; 3rd \$50 ; 4th \$25 ; 5th Ribbon

AuctionsPlus Champion Junior Heifer - \$250 Cash & Gollan Saddlery Halter

Steers:

Class 11 – Clear Vision Imaging Junior Led Steer 421– 480kg

1st: \$100 ; 2nd: \$75 ; 3rd \$50 ; 4th \$25 ; 5th Ribbon

Class 12– Lotus Herefords Junior Led Steer 481– 540kg

1st: \$100 ; 2nd: \$75 ; 3rd \$50 ; 4th \$25 ; 5th Ribbon

AuctionsPlus Champion Junior Steer - \$250 Cash & Gollan Saddlery Halter

RIVERINA STOCKFEEDS GRAND CHAMPION JUNIOR EXHIBIT – 1 Tonne Feed

BLACK TOYOTA + COLIN SAY & COMPANY GRAND CHAMPION - \$2000

Heifers:

Class 13 – Elite Livestock Auctions Unled Steer/Heifer 380 – 430kg

1st: \$200 ; 2nd: \$150 ; 3rd \$100 ; 4th \$50 ; 5th Ribbon

Steers:

Class 14 - Tullin Tulla Beef Pty Ltd Unled Steer/Heifer 431– 540kg

1st: \$200 ; 2nd: \$150 ; 3rd \$100 ; 4th \$50 ; 5th Ribbon

Elite Livestock Auctions Champion Unled - \$500

Colin Say & Co Shootout - \$2000

1st: \$1000 ; 2nd: \$500 ; 3rd \$250 ; 4th \$150 ; 5th \$100

The Colin Say shoot-out is open to all entries that were purchased out of this year's potential show steer sale. This will be judged on the Saturday evening with competitors to note on their entries in to which exhibits are eligible. Entry is free.

Please note that this is a separate class and points do not accrue for the overall CSC \$1000 bonus for the highest pointed overall exhibit purchased from the potential sale.

Limousin State of Origin - \$1000

Sponsored by:

Graneta Limousin, Downfall Limousin, Benjarra Limousin & Jen-Daview Studs

To be eligible entries may be purebred or crossbred (sired by registered Limousin bull) and must have a sire verification. Judging will take place on Saturday afternoon. ENTRIES ARE NOT FROM WHERE THEY RESIDE - IT'S WHAT STATE THEY WERE BRED IN!. 2 teams of 5 will be selected and accrue points throughout the hoof & hook competition.

NSW Charolias Group Show Case - \$1000

Purebred Charolais Steer/heifer \$500

Charolais infused Steer/heifer \$500

Herefords Northern NSW Group - \$1250

\$250 for highest points led 100% Hereford steer

\$250 for the highest points led 50% Hereford steer

\$250 for the highest points carcass 100% Hereford steer

\$250 for highest points carcass 50% Hereford steer

\$250 for the overall highest point 100% Hereford steer.

Top of the Range Murray Grey Bull & Female Sale - \$1500

\$500 to the highest point scoring Murray Grey steer/heifer sired by a Top Of The Range Murray Grey Sire

\$1000 sale credit to the exhibitor of the highest scoring Murray Grey sired steer/heifer.

This credit must be used at the following years Top Of The Range Murray Grey sale.

Ascot Angus & Charolias Grand Champion Carcass - \$1000

Riverina Stockfeeds Grand Champion Junior Carcass - 1 Tonne feed

Woolworths, Bindaree Beef & Our Cow Carcass Competition

All entries will be entered under the M.S.A pathway, so there for all exhibitors must be M.S.A accredited and paperwork to be handed in upon delivery. Cattle will be judged under this protocol, so exhibits that do not meet the M.S.A standards will not be eligible for the carcass competition and grid price deductions will apply.

Woolworths optimum hot standard carcass weights 215 - 310kg

Bindaree Beef optimum hot standard carcass weight <399.9kg

Our Cow optimum hot standard carcass weight <250kg

Exhibitors please note that once again entries outside of the above weights will incur grid penalties.

Grid prices will be available 1 week prior to the competition.

Colin Say & Co \$1000 Incentive

All entries purchased out of this year's potential show steer sale are automatically eligible for this incentive. This is awarded to the highest overall pointed (hoof & hook combined) exhibit. 2 divisions this year (junior/open) reminder the shoot-out does not accrue points.

Jackpot Competition

To be eligible steers/heifers must compete in both the hoof & hook sections of the competition. An additional entry fee of \$30 must be paid upon entering your exhibit. Each exhibit must be declared before weigh in. Junior entries are also allowed entry into the jackpot competition. Winner to be the highest pointed combined score (hoof/hook) of the competition with the winner to take all.

Butcher Grid – Points System

Classes: 1 & 3

OPTIMUM P8 FAT DEPTH: 8 – 12mm / OPTIMUM RIB FAT DEPTH: 5 – 8mm

To receive eating quality points carcasses must have minimum 3mm Rib Fat & pH of 5.7 or lower

<u>Market Specifications (40):</u>				<u>Saleable Meat Yield (30):</u>				<u>Eating Quality (30):</u>		
P8 Fat Pts	Meat Colour	Pts	Fat Marbling Score	Fat Dist.	Colour	Rib Eye (cm ²)	Rib Fat Pts	Calculated Yield %	pH	MSA INDEX
10	5	15	(0-6)penalty	(0-9)penalty		10	10	10		
3	4	1A	3				3	6		
4	5	1B	5	0 = 2	0 = 5		4	8		
5	6	1C	4	1 = 3	1 = 4		5	10		
6	8	2	2	2 = 4	2 = 3		6	10		
7	9	3	1	3 > = 5	3 = 1		7	10		
8	10						8	10		
9	10						9	8		
10	10						10	6		
11	10						11	4		
12	10						12	2		
13	8									
14	6									
15	5									
16	4									

Fat Distribution Points:

- 11 – 15 Fat evenly distributed
- 6 – 10 Slightly uneven
- 1 – 5 Uneven
- 0 Lumpy fat in several depots or insufficient fat

Proudly sponsored by Our Cow

Heifer Grid – Points System

Classes: 2

OPTIMUM P8 FAT DEPTH: 8 – 12mm / OPTIMUM RIB FAT DEPTH: 6 – 10mm

To receive eating quality points carcasses must have minimum 3mm Rib Fat & pH of 5.7 or lower

<u>Market Specifications (40):</u>				<u>Saleable Meat Yield (30):</u>			<u>Eating Quality (30):</u>		
P8 Fat Pts	Meat Colour	Pts	Fat Dist.	Marbling Score	Rib Fat Pts	Calculated Yield %	pH	MSA INDEX	
10	5	15	15	(0-6)penalty	10	10			
4	2	1A	3	0 = 2	3	4			
5	4	1B	5	1 = 3	4	6			
6	6	1C	4	2 = 4	5	8			
7	8	2	2	3 > = 5	6	10			
8	10	3	1		7	10			
9	10				8	10			
10	10				9	10			
11	10				10	10			
12	10				11	8			
13	9				12	6			
14	8				13	4			
15	6								
16	5								
17	4								
18	2								

Fat Distribution Points:

- 11 – 15 Fat evenly distributed
- 6 – 10 Slightly uneven
- 1 – 5 Uneven
- 0 Lumpy fat in several depots or insufficient fat

Proudly sponsored by Woolworths Meats.

Light Weight Grid – Points System

Classes: 4 & 5

OPTIMUM P8 FAT DEPTH: 7 – 10mm / OPTIMUM RIB FAT DEPTH: 5 – 8mm

To receive eating quality points carcasses must have minimum 3mm Rib Fat & pH of 5.7 or lower

<u>Market Specifications (40):</u>				<u>Saleable Meat Yield (30):</u>				<u>Eating Quality (30):</u>			
P8 Fat Pts	Meat Colour	Pts	Fat Dist.	Marbling Score	Colour	Fat	Rib Eye (cm2)	Rib Fat Pts	Calculated Yield %	pH	MSA INDEX
10	5	5	15	(0-6)penalty	(0-9)penalty		10	10	10		
3	4	1A	3				3	6			
4	6	1B	5	0 = 2		0 = 5	4	8			
5	8	1C	4	1 = 3		1 = 4	5	10			
6	9	2	2	2 = 4		2 = 3	6	10			
7	10	3	1	3 > = 5		3 = 1	7	10			
8	10						8	10			
9	10						9	8			
10	10						10	6			
11	9						11	4			
12	8						12	2			
13	6										
14	4										

Fat Distribution Points:

- 11 – 15 Fat evenly distributed
- 6 – 10 Slightly uneven
- 1 – 5 Uneven
- 0 Lumpy fat in several depots or insufficient fat

Proudly Sponsored by Woolworths Meats



Middle Weight Grid – Points System

Classes: 6 & 7

OPTIMUM P8 FAT DEPTH: 9 – 12mm / OPTIMUM RIB FAT DEPTH: 7 – 10mm

To receive eating quality points carcasses must have minimum 3mm Rib Fat & pH of 5.7 or lower

<u>Market Specifications (40):</u>				<u>Saleable Meat Yield (30):</u>				<u>Eating Quality (30):</u>			
P8 Fat Pts	Meat Colour	Pts	Fat Dist.	Marbling Score	Colour (0-9)penalty	Fat	Rib Eye (cm ²)	Rib Fat Pts	Calculated Yield %	pH	MSA INDEX
10	5	15	15	(0-6)penalty	(0-9)penalty		10	10	10		
4	2	1A	3	0 = 2	0 = 5	0 = 5	3	2			
5	4	1B	5	1 = 3	1 = 4	1 = 4	4	4			
6	6	1C	4	2 = 4	2 = 3	2 = 3	5	6			
7	8	2	2	3 > = 5	3 = 1	3 = 1	6	8			
8	9	3	1				7	10			
9	10						8	10			
10	10						9	10			
11	10						10	10			
12	10						11	8			
13	9						12	6			
14	8						13	4			
15	6						14	2			
16	5										
17	4										
18	2										

Fat Distribution Points:

11 – 15 Fat evenly distributed

6 – 10 Slightly uneven

1 – 5 Uneven

0 Lumpy fat in several depots or insufficient fat

Heavy Weight Grid – Points System

Classes 8 & 9

OPTIMUM P8 FAT DEPTH: 10 – 13mm / OPTIMUM RIB FAT DEPTH: 9 – 11mm

To receive eating quality points carcasses must have minimum 3mm Rib Fat & pH of 5.7 or lower

<u>Market Specifications (40):</u>					<u>Saleable Meat Yield (30):</u>			<u>Eating Quality (30):</u>	
P8 Fat Pts	Meat Colour	Pts	Fat Dist.	Marbling Score	Rib Fat (cm ²)	Pts	Calculated Yield %	pH	MSA INDEX
10	5	15	15	(0-6)penalty	10	10	10		
5	3	1A	2	0 = 0	5	4			
6	5	1B	4	1 = 2	6	6			
7	7	1C	5	2 = 3	7	8			
8	8	2	3	3 = 4	8	9			
9	9	3	1	4 >= 5	9	10			
10	10				10	10			
11	10				11	10			
12	10				12	9			
13	10				13	8			
14	9				14	7			
15	8				15	6			
16	7				16	4			
17	6				17	2			
18	5				18	2			
19	4								
20	2								

Fat Distribution Points:

- 11 – 15 Fat evenly distributed
- 6 – 10 Slightly uneven
- 1 – 5 Uneven
- 0 Lumpy fat in several depots or insufficient fat

Proudly Sponsored by Bindaree Beef.

COLIN SAY & CO.

CLASS 13

LED BEEF EXTRAVAGANZA Sunday, September 18th 2022

Elite Livestock Auctions Unled Steer/Heifers 380 - 430kg



Tag	Account	Breed and Sex	Kg
1301	L Newbury	Longhorn X Steer	397
1302	Rewlet Trust	Murray Grey Steer	427
1303	Holy Trinity & H.D.C.A Kids	Limousin X Steer	396
1304	Anthony O'Dwyer	Limousin Steer	380
1305	M & P O'Dwyer	Limousin X Steer	381
1306	Dalby State High School	Limousin X Heifers	421
1307	Dalby State High School	Limousin X Steer	380
1308	Dalby State High School	Limousin X Heifer	404
1309	Dalby State High School	Limousin X Steer	428
1310	Dalby State High School	Limousin X Heifer	411
1311	GM & EJ Muller	Charolais X	425
1312	Scots PGC College & Surawski	Charolais X Red Angus	401
1313	Scots PGC College & Surawski	Charolais X Red Angus	423

Class Winners	1	2	3	4	5
Head 5					

COLIN SAY & CO.

CLASS 14

LED BEEF EXTRAVAGANZA Sunday, September 18th 2022

Tullin Tulla Beef Pty Ltd Unled Steer/Heifer 431 - 540kg



TULLIN TULLA BEEF

Tag	Account	Breed and Sex	Kg
1401	Oscar & Archie Purvis	Santa Gertrudis Heifer	532
1402	Rewlet Trust	Murray Grey Steer	439
1403	J Willcocks & L Cox	Speckle Park X Steer	540
1404	J Willcocks & B Sharpe	Speckle Park X Steer	538
1405	B McMahon & J O'Brien	Charolais X Steer	520
1406	B McMahon & J O'Brien	Simmental X Steer	534
1407	G & L Macrae	Murray Grey X Heifer	536
1409	Dalby State High School	Limousin X Steer	444
1410	Dalby State High School	Limousin X Steer	465
1411	Dalby State High School	Limousin X Steer	504
1412	Dalby State High School	Limousin X Steer	482
1413	Dalby State High School	Limousin X Steer	434
1414	Glen Innes High School	Speckle Park X Steer	500
1415	E Dawson & MP Dawson	Limousin X Heifer	540

Class Winners	1	2	3	4	5
Head 5					

COLIN SAY & CO.

CLASS 10

LED BEEF EXTRAVAGANZA Sunday, September 18th 2022

Amos-Vale Herefords Junior Led Heifers 421 - 540kg



Tag	Account	Breed and Sex	Kg
1001	Holy Trinity & H.D.C.A Kids	Limousin Heifer	462

Class Winners	1	2	3	4	5
Head 5					

COLIN SAY & CO.

CLASS 11

LED BEEF EXTRAVAGANZA Sunday, September 18th 2022



Clear Vision Imaging Junior led steer 421 - 480kg

Tag	Account	Breed and Sex	Kg
1101	Negs	South Devon X Limousin	443
1102	Negs	Charolais X Angus	467
1103	Bonalbo Central School	Limousin X Speckle Park	459
1104	Tamworth High School	Limousin X Charolais	467
1105	Calrossy Anglican School	Angus	467
1106	Calrossy Anglican School	Murray Grey	451
1107	Calrossy Anglican School	Charolais	465
1108	Calrossy Anglican School	Shorthorn	477

Class Winners	1	2	3	4	5
Head 5					

CLASS 12**LED BEEF EXTRAVAGANZA Sunday, September 18th 2022***Lotus Herefords Junior Led Steers 481 - 540kg*

Tag	Account	Breed and Sex	Kg
1201	Negs	Simmental	484
1202	Negs	Charolais X Angus	532
1203	Negs	Charolais X Angus	481
1204	Coonamble High School	Speckle Park X	520
1205	Coonamble High School	Limousin	495
1206	Glen Innes High School	Murray Grey	528
1207	Glen Innes High School	Limousin	512
1208	Glen Innes High School	Speckle Park X	528
1209	Cody Muller	Charolais X	500
1210	Mitchell Muller	Charolais X	494
1211	Stella & Emerald Dean	Hereford	506
1212	Stella & Emerald Dean	Hereford	508
1213	Calrossy Anglican School	Angus	486
1214	Calrossy Anglican School	Limousin	536
1215	Holy Trinity & H.D.C.A Kids	Limousin X	504

Class Winners	1	2	3	4	5
Head 5					

CHAMPIONS



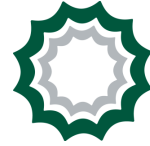
RIVERINA STOCKFEEDS
GRAND CHAMPION JUNIOR EXHIBIT



AuctionsPlus Junior Champion Heifer	AuctionsPlus Junior Champion Steer

COLIN SAY & CO.

CLASS 1 - Butcher Class



**ROBERTS
& MORROW**
CHARTERED ACCOUNTANTS

LED BEEF EXTRAVAGANZA Sunday, September 18th 2022

Roberts & Morrow Led Heifer 380 - 430kg

Tag	Account	Breed and Sex	Kg
101	Tamworth High School	Limousin X Romagnola	397
102	Tookawhile Show Steers	Charolais X	381
103	Anthony O'Dwyer	Limousin	413

Class Winners	1	2	3	4	5
Head 5					

COLIN SAY & CO.

CLASS 2



**ROBERTS
& MORROW**
CHARTERED ACCOUNTANTS

LED BEEF EXTRAVAGANZA Sunday, September 18th 2022

Roberts & Morrow Led Heifer 431 - 540kg

Tag	Account	Breed and Sex	Kg
201	Glen Innes High School	Romagnola X Red Angus	498
202	Holy Trinity & H.D.C.A Kids	Limousin	532
203	Oscar & Archie Purvis	Limousin X Charolais/Murray Grey	467

Class Winners	1	2	3	4	5
Head 5					

COLIN SAY & CO.

CLASS 3 - Butcher Class



LED BEEF EXTRAVAGANZA Sunday, September 18th 2022

Shanahan's Transport Led Steer 360 - 420kg

Tag	Account	Breed and Sex	Kg
301	Negs	Limousin X Santa Gertrudis	399
302	Tookawhile Show Steers	Limousin	371
303	Calrossy Anglican School	Shorthorn	403
304	Holy Trinity & Sentry Box Murray Grey's	Murray Grey	363
305	M & P O'Dwyer	Hereford X Limousin	399
306	Anthony O'Dwyer	Charolais X	405

Class Winners	1	2	3	4	5
Head 5					

COLIN SAY & CO.



CLASS 4

LED BEEF EXTRAVAGANZA Sunday, September 18th 2022

Shanahans Livestock Transport Led Steers 421 - 450kg

Tag	Account	Breed and Sex	Kg
401	B & M O'Dwyer	Limousin	428
402	M & P O'Dwyer	Limousin	447
403	Cultivate Agriculture	Charolais X	425
404	Holy Trinity & H.D.C.A Kids	Limousin X	441
405	Anthony O'Dwyer	Limousin	426
406	Travis Luscombe	Limousin	447
407	Travis Luscombe & Jen-Daview	Limousin	446
408	Neridah Poll Herefords	Hereford X Angus	447
409	Syndicate Show Steers	Simmental X	432

Class Winners	1	2	3	4	5
Head 5					

CLASS 5**LED BEEF EXTRAVAGANZA Sunday, September 18th 2022***AuctionsPlus Led Steers 451 - 480kg*

Tag	Account	Breed and Sex	Kg
501	Coonamble High School	Angus X	477
502	Coonamble High School	Limousin X	471
503	Hartwig Pastoral	Charolais	468
504	Travis Luscombe	Limousin X Angus	480
505	M & P O'Dwyer	Limousin	468
506	Tamworth High School	Limousin X Murray Grey	465
507	Tookawhile Show Steers	Charolais	461
508	M & P O'Dwyer	Limousin	454
509	Travis Luscombe	Limousin X	465
510	Neridah Poll Herefords	Hereford X Shorthorn	460

Class Winners	1	2	3	4	5
Head 5					

COLIN SAY & CO.

CLASS 6



LED BEEF EXTRAVAGANZA Sunday, September 18th 2022

Lockyer Groundspreading Led Steers 481 - 510kg

Tag	Account	Breed and Sex	Kg
601	Coonamble High School	Angus X	496
602	Kemp Family	Angus	490
603	Let Loose Syndicate	Limousin	488
604	Travis Luscombe	Limousin X Angus	496
605	Travis Luscombe & Jen-Daview	Simmental X	488
606	Spence Show Steers & Tookawhile Show Steers	Limousin	508
607	Owen Walmsley	Limousin	497
608	Syndicate Show Steers	Limousin	504

Class Winners	1	2	3	4	5
Head 5					

CLASS 7**LED BEEF EXTRAVAGANZA Sunday, September 18th 2022***Tyrepower Glen Innes Led Steers 511 - 540kg*

Tag	Account	Breed and Sex	Kg
701	Coonamble High School	Limousin X	518
702	Glen Innes High School	Murray Grey	536
703	Holy Trinity & H.D.C.A Kids	Limousin X	528

Class Winners	1	2	3	4	5
Head 5					

COLIN SAY & CO.

CLASS 8



LED BEEF EXTRAVAGANZA Sunday, September 12th 2021

Stocktrans Transport Led Steers 541 - 600kg

Tag	Account	Breed and Sex	Kg
801	Thomas Cronin	Limousin	596
802	Calrossy Anglican School	Angus	590
803	Calrossy Anglican School	Angus	560
804	Holy Trinity & H.D.C.A Kids	Limousin X	570
805	Holy Trinity School	Limousin	592
806	E Dawson & MP Dawson	Limousin X	582
807	E Dawson & MP Dawson	Limousin X	560
808	Travis Luscombe	Limousin X	558
809	Owen Walmsley	Limousin X Murray Grey	580
810	Owen Walmsley	Limousin X Hereford	552
811	Dean Family	Limousin	582
812	Dean Family	Limousin	562
813	Dean Family	Limousin	594

Class Winners	1	2	3	4	5
Head 5					

COLIN SAY & CO.

CLASS 9



LED BEEF EXTRAVAGANZA Sunday, September 12th 2021

Fraser's Transport Led Steers 601 - 680kg

Tag	Account	Breed and Sex	Kg
901	Coonamble High School	Limousin X	608
902	Coonamble High School	Limousin X	660
903	Bonalbo Central School	Hereford X Simmental	630
904	Travis Luscombe	Limousin X	624
905	Let Loose Syndicate	Limousin	679
906	Travis Luscombe	Limousin X Santa Gertrudis	612
907	Travis Luscombe	Limousin X	604

Class Winners	1	2	3	4	5
Head 5					

CHAMPIONS



**ROBERTS
& MORROW**
CHARTERED ACCOUNTANTS

ROBERTS & MORROW CHAMPION HEIFER

THE LAND

The Land Reserve Champion Heifer



AuctionsPlus Champion Lightweight	Taylors Livestock & Heavy Haulage Champion Lightweight



Lockyer Livestock Transport Champion Middle Weight	Jones Family Transport Reserve Champion Middle Weight



Elite Livestock Auctions Champion Heavy Weight	Insignia Company Reserve Champion Heavy Weight

Black Toyota
Committed to the Future



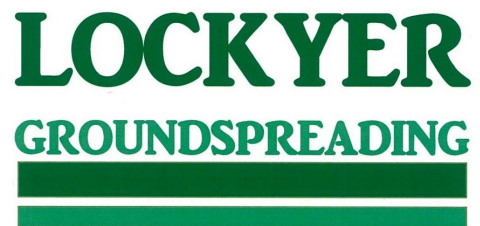
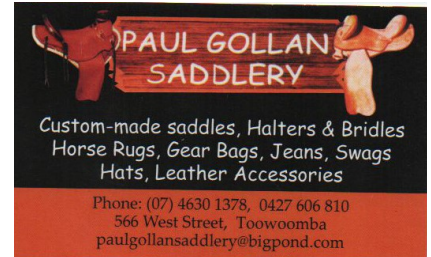
TOYOTA

BLACK TOYOTA GRAND CHAMPION STEER

THANK YOU TO OUR SPONSORS



Woolworths
Australia's fresh food people



SAY & CO RURAL

SHANAHANS
LIVESTOCK TRANSPORT



THANK YOU TO OUR SPONSORS

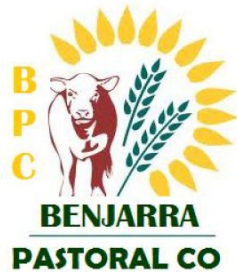


Cross into profit



Charolais

The Cattle Shop
For All Your Cattle Grooming Gear
P.O. Box 418
Goulburn N.S.W. 2580
Phone 0417263460
www.thecattleshop.com.au



Jamesies Fuel & Fix



HEREFORDS
Australia

TOP OF THE RANGE MURRAY GREY BULL & FEMALE SALE